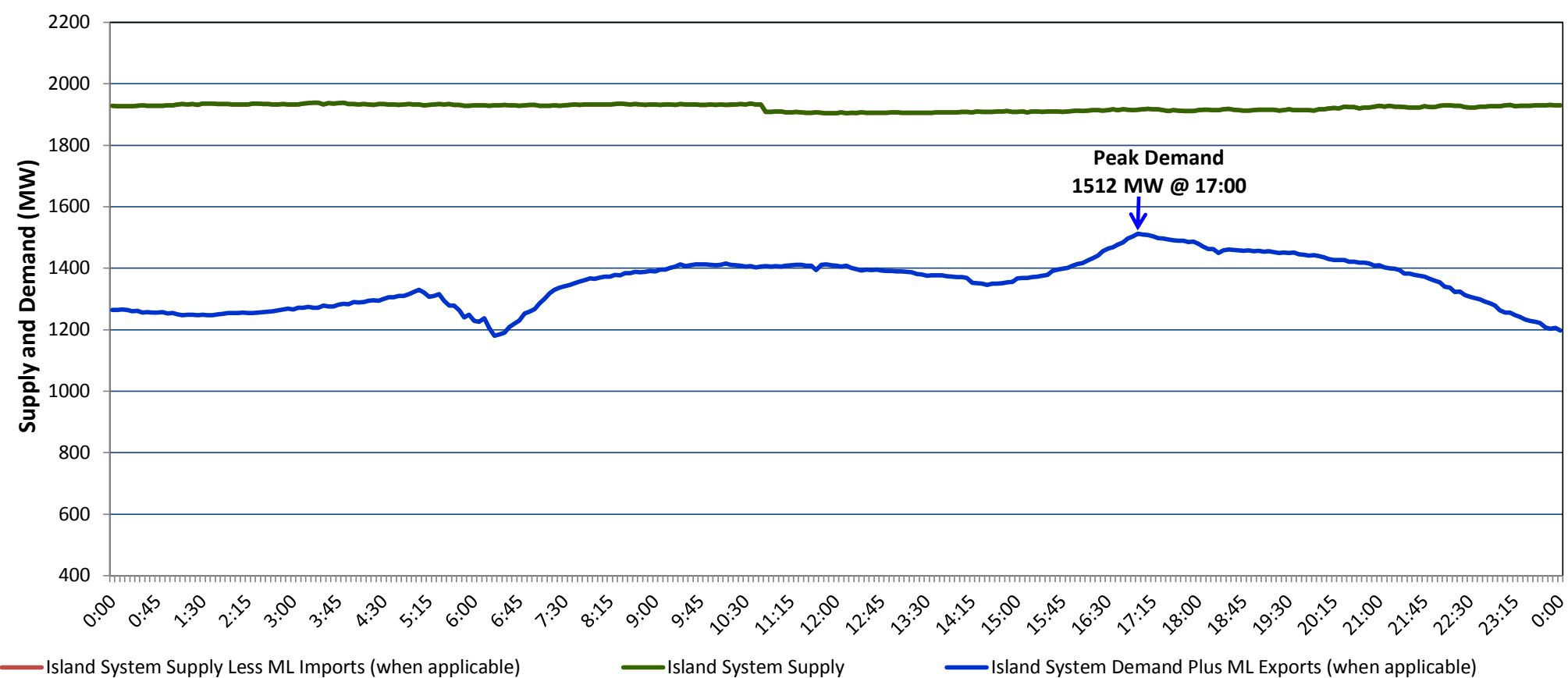


**Newfoundland Labrador Hydro (NLH)
Supply and Demand Status Report Filed Tuesday, January 16, 2018**

**Section 1
Island Interconnected System Supply, Demand & Exports
Actual 24 Hour System Performance For Monday, January 15, 2018**



Supply Notes For January 15, 2018

1,2

- A As of 0739 hours, January 03, 2018, Holyrood Unit 2 available at 154 MW (170 MW).
 B As of 2115 hours, January 04, 2018, Stephenville Gas Turbine available at 25 MW (50 MW).
 C As of 0815 hours, January 08, 2018, Holyrood Unit 1 available at 148 MW (170 MW).
 D As of 2049 hours, January 12, 2018, Holyrood Unit 3 available at 131 MW (150 MW).
 E At 0621 hours, January 15, 2018, Maritime Link testing complete.
 F At 1048 hours, January 15, 2018, Hardwoods Gas Turbine available at 25 MW due to planned outage (50 MW).

**Section 2
Island Interconnected Supply and Demand**

Tue, Jan 16, 2018	Island System Outlook ³		Seven-Day Forecast	Temperature (°C)		Island System Daily Peak Demand (MW)	
				Morning	Evening	Forecast	Adjusted ⁷
Available Island System Supply: ⁵	1,920	MW	Tuesday, January 16, 2018	-4	-3	1,555	1,446
NLH Generation: ⁴	1,585	MW	Wednesday, January 17, 2018	-5	-5	1,555	1,446
NLH Power Purchases: ⁶	135	MW	Thursday, January 18, 2018	-3	5	1,475	1,367
Maritime Link Imports:	-	MW	Friday, January 19, 2018	2	-3	1,485	1,377
Other Island Generation:	200	MW	Saturday, January 20, 2018	-6	-2	1,470	1,362
Current St. John's Temperature & Windchill:	-4 °C	-12 °C	Sunday, January 21, 2018	-1	-3	1,525	1,416
7-Day Island Peak Demand Forecast:	1,555	MW	Monday, January 22, 2018	-1	-2	1,465	1,357

Supply Notes For January 16, 2018

3

- Notes:
1. Generation outages for running and corrective maintenance are included. These are not unusual for power system operations. They generally do not impact customer supply. The power system operators schedule outages to system equipment whenever possible to coincide with periods when customer demands are low and sufficient supply reserves are available. However, from time to time equipment outages are necessary and reserves may be impacted.
 2. Due to the Island System having no synchronous connections to the larger North American grid, when there is a sudden loss of large generating units some customer's load must be interrupted for short periods to bring generation output equal to customer demand. This automatic action of power system protection, referred to as under frequency load shedding, is necessary to ensure the integrity and reliability of system equipment. Under frequency events typically occur 5 to 8 times per year on the Island Interconnected System and the resultant customer load interruptions are generally less than 30 minutes.
 3. As of 0800 Hours.
 4. Gross output including station service at Holyrood (24.5 MW) and improved NLH hydraulic output due to water levels (35 MW).
 5. Gross output from all Island sources (including Note 4).
 6. NLH Power Purchases include: CBPP Co-Gen, Nalcor Exploits, Rattle Brook, Star Lake, Wind Generation, Vale capacity assistance (when applicable).
 7. Adjusted for CBP&P, Vale and Praxair interruptible load, Maritime Link Exports and the impact of voltage reduction (when applicable).

**Section 3
Island Peak Demand Information
Previous Day Actual Peak and Current Day Forecast Peak**

Mon, Jan 15, 2018	Actual Island Peak Demand ⁹	17:00	1,512 MW
Tue, Jan 16, 2018	Forecast Island Peak Demand		1,555 MW

- Notes: 9. Island Demand / ML Exports (where applicable) is supplied by NLH generation and purchases, plus generation owned and operated by Newfoundland Power and Corner Brook Pulp & Paper (Deer Lake Power, DLP).